



# COMPANY PRESENTATION 2024

*SCANDINAVIAN TANK STORAGE*

## ABOUT US

Scandinavian Tank Storage AB is a privately owned, independent storage company for petroleum based products and bio fuels. Since forming back in 1993, we have been guided by the simple philosophy of combining professionalism and cost-efficiency to stimulate good business and make life easier for our customers.

Always adopting a long-term, personal approach when dealing with our clients and associates, we see ourselves more as a proactive partner than a supplier of services. In addition, our awareness of market requirements and solutions-orientated approach mean we currently hold a market-leading position in the Nordic region.

Our modern terminals are capable to handle distribution as well as strategic storage, storage for arbitrage business and contango storage. The company's expert workforce of around 20 employees has long and extensive experience in the industry, and many of its owners play an active role in the firm, ensuring a high level of commitment and speedy decision making. We also focus strongly on expansion and development, together with our customers and partners.



## WHAT WE OFFER

We continually strive to provide market-leading solutions for all types of storage needs, in both caverns and tanks, operating 24 hours a day.

All our storage facilities are situated in strategic, carefully selected locations across the Nordic region, our flexibility and wide range of solutions enable us to store a selection of products and qualities.

Through ownership, joint ventures and long-term partnership agreements, we can always provide large storage capacity and innovative solutions at competitive prices. Our pursuit of the highest standards and security means we continually invest in new technology and effective infrastructure at our terminals.

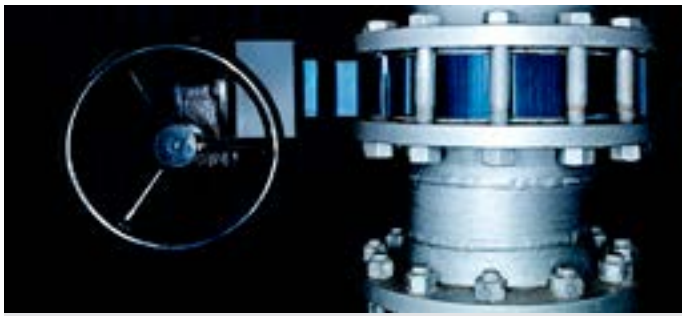
Our total storage capacity is almost four million cubic metres. Our business is spanning from the largest crude storage in Scandinavia, 1,4 million cubic meters based in Gothenburg, to supplies of jet fuel to Keflavik international airport.

# SUSTAINABILITY

There is a high level of expertise on sustainable development throughout the organisation, which forms a key part of our operations. We also cooperate closely with our partners and the authorities. Our activities are governed by strict licensing procedures, and compliance with legislation is a minimum requirement. We always strive to remain one step ahead, this means continually adapting our environmental measures in accordance with the latest technologies and expertise. Our responsible, holistic approach is directly linked to the trust which others place in us, which is fully aligned with our own values.

Energy in STS operations is sourced from sustainable energy and STS terminal business (STS hf) in Iceland is now 100% CO<sub>2</sub> neutral after a carbon offset. Keflavik is one of very few international airports that are 100% CO<sub>2</sub> neutral. STS mission is to be 100% CO<sub>2</sub> neutral in all terminal operations by 2027.





## Aalborg

🇩🇰 Denmark

📍 Latitude: 57.073206 | Longitude: 10.042571

STS offers a storage in Aalborg, Denmark. Location is ideal very close to Scandinavian refineries and suitable for storing of Fuel oil and VGO. Storage capacity is 4 x 55.000 cbm. Customers have option to add truck loading and other services if needed.

### Total storage capacity

220 000 m<sup>3</sup>

### Number of tanks

4

### Tank size

55,000 m<sup>3</sup>

### Products

Vgo, Fuel Oil

### Pump capacity

up to 1000 m<sup>3</sup>/h

### Restrictions

Max LOA	250 m
Max beam	No restrictions
Max draft at low tide	10 m

## Gothenburg

🇸🇪 Sweden

📍 Latitude: 57.687772 | Longitude: 11.792747

Located in Gothenburg on the Swedish west coast. The cavern is strategically located with easy access from both the Baltic Sea and the North Sea. As the port is located north of the Danish strait, vessels coming from the North Sea are not affected by the Baltic Max depth of 15.5 metres.

### Total storage capacity

1 260 000 m<sup>3</sup>

### Number of caverns

2

### Cavern size

600 000 m<sup>3</sup> / 450 000 m<sup>3</sup>

### Products

Crude Oil

### Pump capacity

up to 6 000 m<sup>3</sup>/h

### Restrictions

	Berth 800	Berth 801
Max LOA	280 m	335 m
Max beam	50 m	60 m
Max draft at M.W.L.	17 m	19.05 m
Waterline to manifold	25 m	25 m

## Gävle

🇸🇪 Sweden

📍 Latitude: 60.690444 | Longitude: 17.217442

Despite its northerly location, Gävle port is ice-free all-year-round. In addition, Gävle offers a strategic location for transport to Finnish ports. The distance by land to Stockholm is 170 kilometres, making Gävle an interesting option in this vital region.

### Total storage capacity

758 000 m<sup>3</sup>

### Number of caverns

6

### Number of tanks

3

### Cavern size

90 000 - 160 000 m<sup>3</sup>

### Tank size

4 000 -17 000 m<sup>3</sup>

### Products

Jet A1, Kerosene, Gas Oil

### Pump capacity

up to 600 m<sup>3</sup>/h

### Restrictions

Max LOA	245 m
Max beam	42 m
Max draft at M.W.L.	12.2 m
BCM	160 m



## Helguvik

🇮🇸 Iceland

📍 Latitude: 64.017778 | Longitude: -22.550556

Jet A-1 storage. The terminal connects via pipeline to Iceland's International airport, Keflavik. Plans to offer Bio-Jet storage starting 2022/2023.

### Total storage capacity

121,500 m<sup>3</sup>

### Products

Jet A1

### Restrictions

Max LOA	210 m
Max Beam	No restrictions
Max draft at low tide	14 m

## Hvalfjordur – Midsandur

🇮🇸 Iceland

📍 Latitude: 64.568333 | Longitude: -21.711389

Hvalfjordur, is an ice-free port on the west coast of Iceland. The terminal offers private jetty, Midsandur, with good draft for up to 80 000 dwt vessels. The terminal offers many storage options: gasoline, gas oil, Jet A1, ethanol, methanol, naphta, gasoline components and kerosine.

### Total storage capacity

110 000 m<sup>3</sup>

### Number of tanks

13

### Tank size

4x 12 500 m<sup>3</sup> and 9x 6700 m<sup>3</sup>

### Products

Gasoline, Naptha, Jet A1, Kerosene, Gas Oil, Ethanol, Methanol

### Pump capacity

Up to 1500 m<sup>3</sup>/h

### Restrictions

Max Draft	13 m
LOA	230 m
Max Breadth	50 m

## Karlshamn

🇸🇪 Sweden

📍 Latitude: 56.157283 | Longitude: 14.820168

Our caverns and tanks are directly linked to Karlshamn Port's well-managed facilities. A good depth of 12.5 metres and close proximity to the Baltic States, Poland and Germany makes Karlshamn attractive from several perspectives. The main storage products are Gas Oil, Fuel Oil and VGO.

### Total storage capacity

423 200 m<sup>3</sup>

### Number of caverns

3

### Number of tanks

17

### Cavern size

80 000 - 175 000 m<sup>3</sup>

### Tank size

200 - 13 500 m<sup>3</sup>

### Products

Jet A1, Kerosene, Gas Oil, VGO, Fuel Oil

### Pump capacity

Up to 1 200 m<sup>3</sup>/h

### Restrictions

Max LOA	
Max beam <small>if the LOA is max 180m</small>	
Max beam <small>if the LOA is max 185m</small>	
Max draft at M.W.L.	
Waterline to manifold	

### Oxhaga

230 m
No restrictions
No restrictions
12.5 m
24 m

### Sutudden

180/185 m
32m
28m
10 m
20 m



## Kristinestad

🇫🇮 Finland

📍 Latitude: 62.266667 | Longitude: 21.350000

In Kristinestad in partnership with the terminal operator Alfa Oil we offer crude oil storage total of 360.000 m<sup>3</sup>. Terminal to be operational beginning Q2 2021.

### Total storage capacity

360 000 m<sup>3</sup>

### Number of caverns

1

### Products

Crude Oil

### Pump capacity

Up to 1000 m<sup>3</sup>/h

### Restrictions

Max LOA	210 m
Max Beam	31 m
Max Draft	12 m

## Malmö

🇸🇪 Sweden

📍 Latitude: 55.633445 | Longitude: 13.015750

Our largest tank capacity is in the middle of Scandinavia's most expansive region. Strategic location near the Great Belt and an optimal hub for traffic to and from the Baltic States and Rotterdam, for example. A depth of 12.5 metres makes the port a good base for transports to the American ports.

### Total storage capacity

450 000 m<sup>3</sup>

### Number of tanks

31

### Tank size

200 - 30 000 m<sup>3</sup>

### Products

Jet A1, Kerosene, Gas Oil, VGO, Fuel Oil, HVO, Gasoline

### Pump capacity

Up to 3 500 m<sup>3</sup>/h

### Restrictions

Max LOA	250 m
Max beam	45 m
Max draft at M.W.L.	12.5 m
Waterline to manifold	17.5 m

### Berths 1003 & 1004

Max LOA	250 m
Max beam	45 m
Max draft at M.W.L.	12.5 m
Waterline to manifold	17.5 m

## Norrköping

🇸🇪 Sweden

📍 Latitude: 58.619835 | Longitude: 16.248152

In Norrköping our storage capacity consists solely of tanks. A definite advantage if you are mixing different products. The excellent land transport possibilities makes the port a good option to the Stockholm region. Another advantage is the close distance to the Baltic States and Finland.

### Total storage capacity

58 000 m<sup>3</sup>

### Number of tanks

7

### Tank size

5 000 - 20 000 m<sup>3</sup>

### Products

Jet A1, Kerosene, Gas Oil, Bitumen

### Pump capacity

Up to 900 m<sup>3</sup>/h

### Restrictions

Max LOA	260 m
Night restriction LOA	220 m
Max draft at M.W.L.	10.1 m
Waterline to manifold	15 m
BCM	130 m

### Berth P1

Max LOA	260 m
Night restriction LOA	220 m
Max draft at M.W.L.	10.1 m
Waterline to manifold	15 m
BCM	130 m

### Berth P2

Max LOA	260 m
Night restriction LOA	220 m
Max draft at M.W.L.	13.5 m
Waterline to manifold	15 m
BCM	130 m



## Pori

🇫🇮 Finland

📍 Latitude: 61.592371 | Longitude: 21.493583

In Pori in partnership with Finland Tank Storage Oy we offer middle distillate storage with two caverns total of 300 000 m<sup>3</sup>. Practically ice-free during winter.

### Total storage capacity

300,000 m<sup>3</sup>

### Number of caverns

2

### Products

Gasoline, Biodiesel

### Pump capacity

Up to 1,000 m<sup>3</sup>/h

### Restrictions

Max LOA	220 m
Max Draft	10 m



# GOTHENBURG

Sven Källfelts gata 201,  
426 71 VF Göteborg, Sweden  
Switchboard: +46 31 769 00 00  
Fax: +46 31 769 00 50  
Operations: +46 31 769 00 10

# MALMÖ

Oljevägen 28, 211 24 Malmö, Sweden  
Phone: +46 40 680 28 70

# ICELAND

Hlidasmara 6, 201 Kopavogur, Iceland

[www.scandinaviantankstorage.com](http://www.scandinaviantankstorage.com)  
[sts@scandinaviantankstorage.com](mailto:sts@scandinaviantankstorage.com)

**SCANDINAVIAN TANK STORAGE**